

Instructions Rear Differential Mount

Z5206
Rev C



Application: Nissan:

- 350Z 2003 - 09
- 370Z 2008 - 09
- Skyline V35/V36

Contents:

- 2x Bushing 67419
- 2x Bushing 67415
- 1x Bushing 67419
- 2x Steel tubes 22.2x12.2x60
- Grease

Page 1 of 2

N.B: This instruction sheet should be used in conjunction with the workshop manual and proper safety procedures followed.

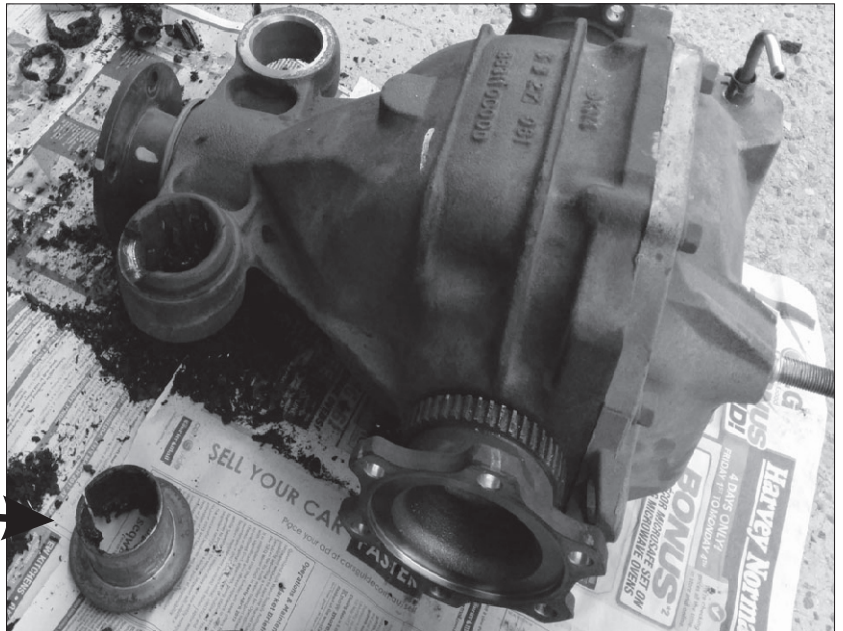
- Raise vehicle evenly and safely support.

Never rely on a Jack only

- Proceed to Completely remove diff from vehicle - remove rear swaybar and disconnect drive shafts, including tail shaft.

NOTE - using a texter, mark tail shaft alignment with diff yoke prior to un-bolting.

- Proceed to push out original bushings. This can be done with a Air-hacksaw. Cut a 'slit' in side of bushing as per image - careful to not damage diff housing.



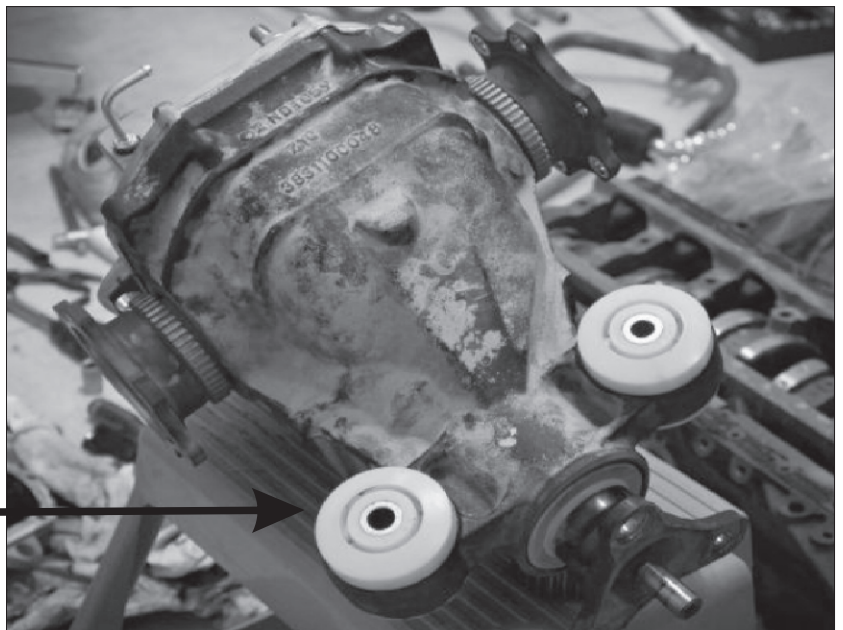
- Once bushings are removed, clean housing and push new supplied bushings in place.

Place larger bushing 67415 on the up-side of housing.
Place smaller bushing 67414 on the lower side of housing.

- Grease bushing inside diameter and faces with supplied grease only.
- Push in supplied steel tubes

Place larger bushing 67415 on up-side as per image.

Discard OE upper washer.



Warning: Please drive carefully while you accustom yourself to the changed vehicle behaviour.

Instructions Rear Differential Mount

Z5206
Rev C

Page 2 of 2

N.B: This instruction sheet should be used in conjunction with the workshop manual and proper safety procedures followed.

Continued:

- The rear bushing can be removed and installed with home-made mechanical puller as per image. Alternatively, use a powered Hack-saw to cut the outer steel shell (careful of aluminium sub-frame)

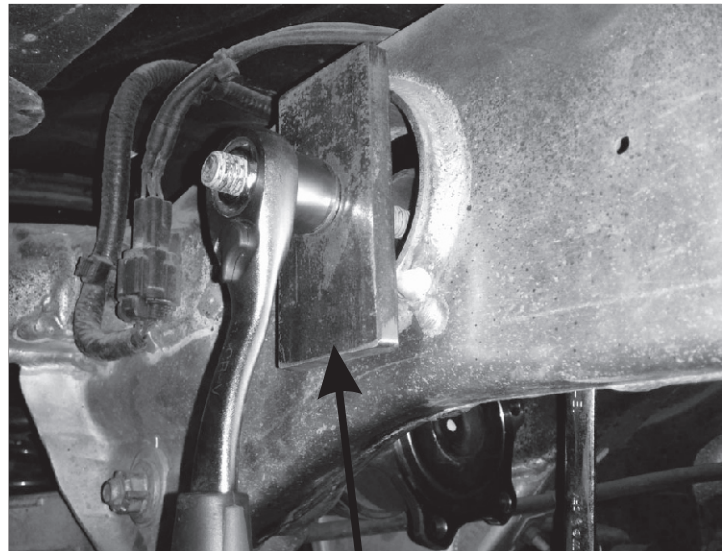
- Place new supplied bushing 67419 in sub-frame. A small amount of grease here can help with install and operation.

Note images below - the rear bushing face should sit even with sub-frame.

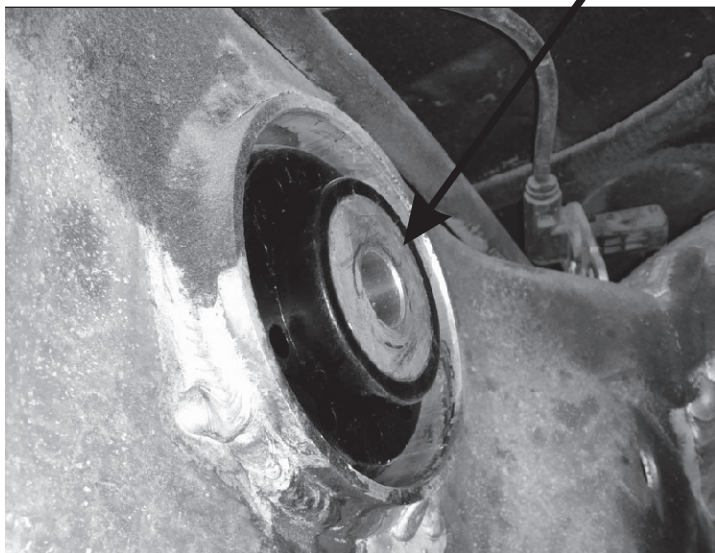
- Lift differential into position - mount and tighten with original bolts.

- Bolt up drive-shafts and swaybar.

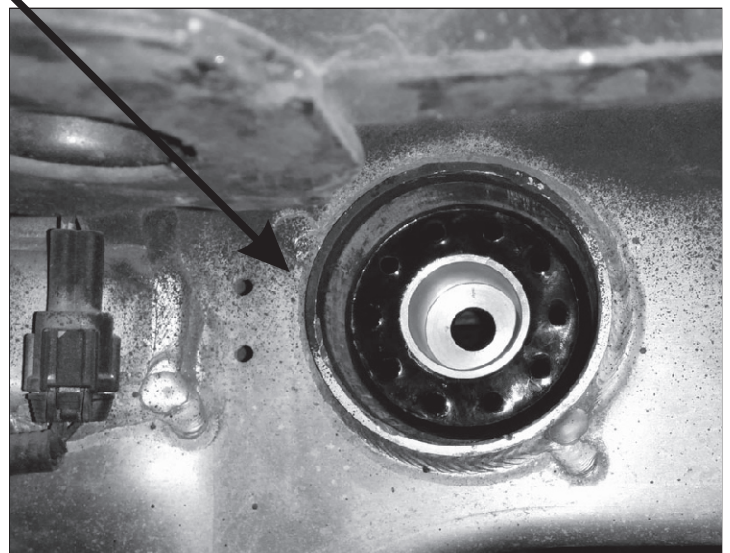
- Road test. Re-check all bolts after 100kms travelled.



Note - home-made mechanical puller



Note - new bushing position in regards to sub-frame



Warning: Please drive carefully while you accustom yourself to the changed vehicle behaviour.